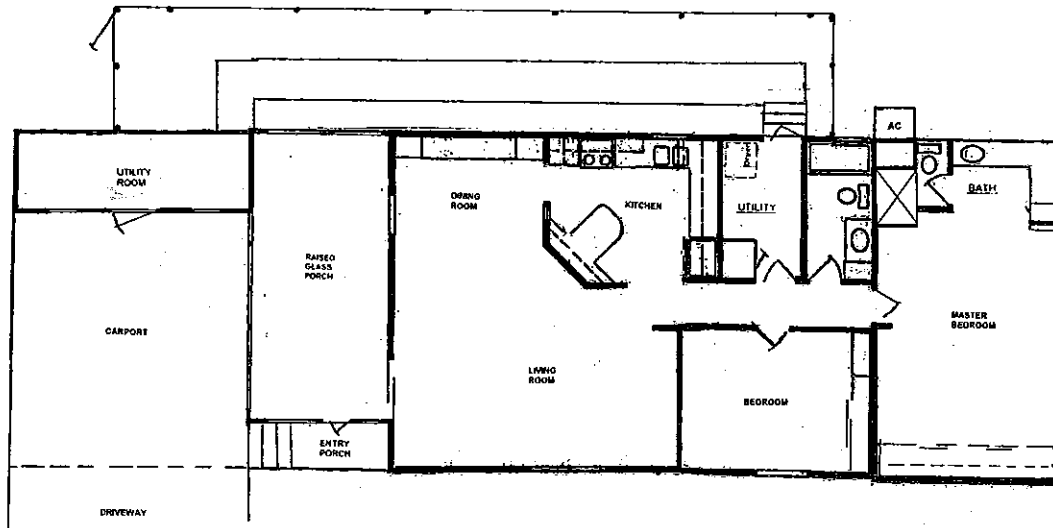


1203 Apache Drive



Floor plan similar to featured home Call us to see the interior!

- ✓ Scene-stealing Skyline home on BIG corner lot boasts loads of curb appeal!
- ✓ Double drive leads to wood-constructed carport complete with house-quality trusses!
- ✓ New shingle roof 2004!
- ✓ BIG utility room for lots of storage space!
- ✓ BIG raised glass porch with vaulted wood ceiling, wall A/C unit, and wood-laminate flooring!
- ✓ Sliding glass doors open to BIG living room great for entertaining!
- ✓ Open dining room with built-in china cabinet plus window overlooking porch!
- ✓ Great kitchen with freshly painted ivory cabinetry, wood-tone counters, built-in breakfast bar!
- ✓ Appliances include newer glass top self-clean range plus newer refrigerator with icemaker!
- ✓ BIG guest bedroom!
- ✓ BIG master suite with double wall closet plus private bath!
- ✓ Cathedral ceilings in living areas and master suite add elegance!
- ✓ Newer wood laminate flooring and light décor throughout!
- ✓ Steals the scene and steals your heart!